

International & Student Choir Festival
in *beautiful*
N a s s a u B a h a m a s

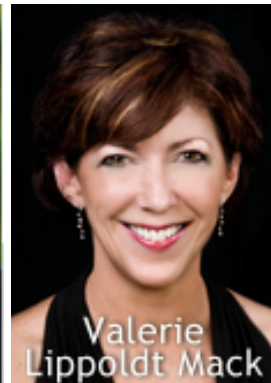
April 24-28, 2013

hosted by:

Greg Gilpin, Composer/Conductor

Joseph Martin, Composer/Conductor

Valerie Lippoldt Mack, Conductor/Choreographer/Author



YOUR CHOIR WILL:

- Sing for other choirs AND be evaluated by our panel of experienced clinicians
- Sing with local Nassau musicians and learn more about their music and culture
- Be exposed to the BEST choral instruction and sharpened through direct exposure to top composers
- Learn new choreography and movement ideas with Valerie Lippoldt Mack and work with her talented show choir, the Butler Headliners
- Grow from this experience together and leave with a lifetime of memories
- Sing the music of Joseph Martin and Greg Gilpin in a massed choir setting
- Learn about and experience the musical culture of the Bahamas



2090 BAKER ROAD ● SUITE 304-104 ● KENNESAW, GEORGIA 30144

TELEPHONE: (888) 935-5551 ● FAX: (770) 635-8585

WWW.HARMONYINTERNATIONAL.COM ● KRISTA@HARMONYINTERNATIONAL.COM



Greg Gilpin

Originally from the "Show-Me" state of Missouri, Greg Gilpin resides in Indianapolis, IN. He is a graduate of Northwest Missouri State University with a Bachelor's Degree in Vocal Music Education, K-12.

Greg is a well-known ASCAP-award-winning choral composer and arranger with hundreds of publications to his credit. He is also in demand as a conductor for choral festivals, all-district and all-state choirs and is a member of MENC and ACDA. As Director of Educational Choral Publications for Shawnee Press, Greg oversees creation of the educational music products for this distinguished publisher.

At home in Indianapolis, Greg is busy as a studio musician and producer in the recording industry. These projects include commercial jingles, CD projects, Broadway and Disney. He has worked musically with Ray Boltz, Bill and Gloria Gaither, Sandi Patty, David Clydesdale as well as principal pops conductor, Jack

Everly and the Indianapolis Symphony Orchestra.



Joseph Martin

Joseph Martin, a native of North Carolina, earned his Bachelor of Music degree in Piano Performance at Furman University in Greenville, South Carolina and a Master of Music degree in Piano Performance at the University of Texas, Austin. He taught for five years in the Piano Pedagogy Department of the University of Texas. While at Furman University, he was accompanist for choral director and composer Milburn Price and, inspired by his teaching, Martin began to compose.

He is a member of the staff of Shawnee Press as Director of Sacred Publications, with responsibilities for overseeing the editorial and creative direction of the company's sacred publications and also coordinating the recording and production aspects of future sacred publishing efforts.

Joseph has performed solo piano recitals and has been the featured artist with symphony orchestras in the United States and Mexico. His first solo piano recording, *American Tapestry*, was nominated for a Dove Award. This album, along with his other recordings (*Songs of the Journey*, *Celtic Tapestry*, and *A Christmas Tapestry*) has been enormously popular. He has recorded for Yamaha's Disklavier series and has composed hundreds of commissioned works.

Recognized throughout the United States for his many choral compositions, over 1200 compositions are currently in print and the list continues to grow. In 2008 he was inducted as a National Patron of the Delta Omicron International Music Fraternity.

His music can be heard in such diverse locations as Carnegie Hall in New York City; the Lawrence Welk Theatre in Branson, Missouri; and in hundreds of churches across the United States and Canada. In addition, his works have been performed in cathedrals in Germany, Austria, England, Ireland, Scotland and Austria.

Joseph lives in Austin, Texas with his children Jonathan and Aubrey and his wife Sue.



Valerie Lippoldt Mack

Valerie Lippoldt Mack, lead instructor of music at Butler Community College in El Dorado, Kansas received a Bachelor of Arts from Bethany College, a Bachelor of Music Education and Master's of Music Education from Wichita State University. Valerie has gained experience and recognition as a music educator and professional choreographer throughout the United States. Her choreography has been featured at Carnegie Hall, Disney World, national ACDA conventions and MENC workshops. A noted clinician, adjudicator and director, she has presented and adjudicated more than 500 workshops and festivals, including the Shawnee Press annual Music in the Mountains event. She and her husband Tom, direct the annual Butler Showchoir Showcase each summer in El Dorado, Kansas.

At Butler Community College, Valerie directs the 100-voice Butler Concert Choir, the Butler Headliners Show Choir, the Smorgaschords Barbershop Quartet, and teaches tap dance and private voice. The Headliners have hosted America Sings! Festivals in Washington, DC and Houston, Texas. They have hosted a National Showstoppers Competition in Nashville, Tennessee and performed in the National Branson Jubilee Show Choir Competition in Branson, Missouri. They have also traveled to Disney World, Niagara Falls, Las Vegas, Denver, San Antonio, Kansas City, and Canada. Valerie was honored as the Butler Master Teacher, has delivered commencement addresses, and is in demand as a motivational speaker for numerous events.

In her spare time, Valerie teaches at the Kansas Dance Academy, is a talent coach for the Miss America program, and is involved with family activities. Valerie and Tom reside in Wichita, Kansas with their two children, Stevie and Zane.

2090 BAKER ROAD ● SUITE 304-104 ● KENNESAW, GEORGIA 30144

TELEPHONE: (888) 935-5551 ● FAX: (770) 635-8585

WWW.HARMONYINTERNATIONAL.COM ● KRISTA@HARMONYINTERNATIONAL.COM



Designed for STUDENT HIGH SCHOOL CHOIRS and those who direct them!
This amazing event will include educational, cultural, & musical opportunities
(with the best clinicians and music) for both the choir and the directors.

DAILY ITINERARY

(Subject to change)



WEDNESDAY, APRIL 24

- ⊙ Morning departure from the U.S. to Nassau, Bahamas
- ⊙ AFTERNOON – Based on your arrival time in Nassau, we'll have a bus tour of Nassau to learn about the people, history, and culture of the Bahamas. Afterwards we'll check into our hotel.
- ⊙ EVENING – "Welcome to the Bahamas" dinner at the hotel tonight with Joseph Martin, Greg Gilpin, and Valerie Lippoldt Mack! After dinner, our first massed choir rehearsal.

THURSDAY, APRIL 25

- ⊙ MORNING – After breakfast, the Festival begins including individual choir performances and workshops with our clinicians.
- ⊙ AFTERNOON – Free time for lunch and your own and time for exploration of the local culture. (A list of suggested cultural activities and historic sites will be provided.)
- ⊙ EVENING – Dinner on your own followed by evening festivities (TBA).



FRIDAY, APRIL 26

- ⊙ MORNING – After breakfast, the Festival continues including individual choir performances and workshops with our clinicians.
- ⊙ AFTERNOON – We'll board our buses and head to the downtown area of Nassau for opportunities to sing for locals and visitors in and around the Straw Market and historic sites in Nassau.
- ⊙ EVENING – Tonight's dinner we will take part in a Caribbean-style Fish Fry—a Friday tradition for Bahamian locals. The specialty is conch fritters but there will be an abundance of other foods such as pan-fried grouper, shrimp, and chicken.



SATURDAY, APRIL 27

- ⊙ MORNING – After breakfast, final massed choir rehearsal.
- ⊙ AFTERNOON – Free time for lunch on your own and to explore the island and local culture.
- ⊙ EVENING – Dinner on your own followed by a special time of awards and recognition and to share some special video moments of the past 4 days!
- ⊙ EVENING – Massed Choir Concert.

SUNDAY, APRIL 28

- ⊙ MORNING – Transfer to airport for return flight to the US.



INSTRUCTIONS FOR PURCHASING AIR

Since the International Student Choir Festival is made up of choirs from various locations around the United States we have not included airfare in the project cost. Harmony International will work with each choir on an individual basis to obtain group airfare.

Air schedules are available to purchase beginning 11 months prior to departure date. This means prices and schedules for air will not be available until after May 28, 2012. Please do not contact the Consolidator prior to this date.

INSTRUCTIONS FOR SECURING AIR:

FOR INDIVIDUALS

After May 28, 2012, please contact:

Cammy McDonald at Consolidator Group Travel

Phone: 1.888.GROUP.05

Email: Cammy@ConsolidatorGroups.com

- Identify yourself as a traveler with the International Student Choir Festival to Nassau, Bahamas.
- Be prepared with your credit card information in order to finalize your airfare.
- Consolidator Group Travel will provide specific information to Harmony International about your scheduled flight so we can best coordinate your arrival/departure.

OR

FOR GROUPS

For groups of 15 or more people who are traveling together from the same US point of departure on the same dates.

- Contact Krista Montgomery at 1.888.935.5551 ext. 3 OR Krista@HarmonyInternational.com if your group qualifies for group airfare
- We will work individually with each group on point of departure, schedule, and pricing.
- Group reservations are booked as roundtrip travel.
- Group reservations are booked in coach/economy class and are not upgradeable. Harmony International cannot pre-assign seats.
- Group reservations cannot be made with mileage points, but if you are enrolled in a frequent flyer program with the airline the group is flying, you can earn points for your flights.
- Changes made after the group reservation is finalized will result in change fees.

2090 BAKER ROAD ● SUITE 304-104 ● KENNESAW, GEORGIA 30144

TELEPHONE: (888) 935-5551 ● FAX: (770) 635-8585

WWW.HARMONYINTERNATIONAL.COM ● KRISTA@HARMONYINTERNATIONAL.COM



WHAT'S INCLUDED IN YOUR PROJECT COST?

1. **Transportation within Nassau** by motor coach or other transportation as listed in the itinerary.
2. **Concert/Educational/Cultural Arrangements** are provided as authorized by local and national authorities. As such, the performance venue and schedules are subject to their discretion. Sightseeing and cultural activities are scheduled around these significant arrangements. *(HI is not responsible if inclement weather, local political situations, or changes made by the host concert site are cause for the last minute cancellation or change of a concert.)*
3. **Accommodations** at 3 or 4 star property with en suite facilities. Student pricing is based on 4 students per room.
4. **Meals covered per itinerary.**
5. **Sightseeing excursions** as outlined in the day-by-day itinerary. Guides are also selected based upon experience, referral, knowledge and ability to deal with people.
6. **Assistance** from HI staff as requested. Members of the HI staff will be with the group throughout the Tour. We will also have a global cell phone for transcontinental use in case of emergencies.
7. A pre-departure **HI Travel Packet** is available to each participant containing useful information about travel preparation, destination information, useful packing and cultural conditioning suggestions as well as insights and travel documents.
8. A **Printed itinerary** is given to each individual listing hotel addresses, local contact phone numbers, and HI staff contact procedure.

9. **Individual health insurance coverage** is included in ALL HI projects covering each individual (see summary of coverage below).
10. **Tour Management** is conducted by HI working directly with local agencies to establish objectives, develop itineraries, and coordinate all items related to the project.

Summary of Coverage

| | |
|---|------------------|
| Accidental Death & Dismemberment..... | \$100,000/Person |
| Disability Income, for 1 st through 100 th months, | |
| Accident | 1,000/Month |
| For 101 st through 200 th months, Accident..... | \$500/Month |
| For Sickness 50 Month Benefit | |
| 3 Month Waiting Period | \$250/Month |
| Medical Expense, \$100.00 Deductible | \$10,000 |
| Note: \$2,500 of this benefit can be used to meet eligible medical expense incurred in the U.S. | |
| Emergency Medical Transportation | \$75,000 |
| Repatriation of Mortal Remains..... | \$7,500 |
| Family Coordination..... | \$15,000 |
| Medical Assistance (24 Hour Telephone Service) | |
| For Assistance with Worldwide Medical Emergencies..... | Included |
| Property (Baggage) Insurance | |
| \$100.00 Deductible | \$2,500 |
| Aggregate Personal Limit | \$2,000,000 |

Additional optional health and accident, baggage, and trip cancellation insurance is available. Call Margie at 678.398.7007 for more information

NOT INCLUDED IN TOUR

1. US Passport or process of obtaining a passport.
2. Domestic travel to U.S. point of international departure.
3. Airfare.
4. Meals not listed in itinerary.
5. Items of a personal nature.



WHAT'S MY NEXT STEP?

To register each participant **must** complete ALL the following steps:

STEP 1: Go to www.HarmonyInternational.com.

STEP 2: Click on "Register for a Project" in the bottom right corner of the website.

STEP 3: From the drop-down menu, choose "HI130 – BAHAMAS – International Student Choir Festival."

STEP 4: Complete all Registration Information.

STEP 5: Read and agree to the Terms of Registration.

STEP 6: Click on "Register." An email will be sent to the email address you provided indicating your online registration is complete.

STEP 7: Sign the Participant Letter of Agreement AND the Liability Release Agreement included in this packet.

STEP 8: Return both the Participant Letter of Agreement and the Liability Release Agreement along with a check made payable to Harmony International for your \$200 registration fee. Mail Liability Release Agreement and payment to:

HARMONY INTERNATIONAL
2090 Baker Road
Suite 304-104
Kennesaw, Georgia 30144

OR you may fax your forms to (770) 635-8585.

STEP 9: Please note your payment schedule included in this package.

SPECIAL NOTES: \$200 deposit is *required* to complete initial registration.



PARTICIPANT LETTER OF AGREEMENT

Effective Date: October 17, 2011

This Letter of Agreement is made by and between Harmony International (HI) and the following participant for the **HI130 International Student Choir Festival** (Project):

Please Print FULL NAME (as is appears on passport)

ITINERARY

PROJECT: HI130 International Student Choir Festival
April 24-28, 2013
5 Days/4 Nights

PRICING PER PARTICIPANT
(does not include airfare)

| COST PER STUDENT (Quad Occupancy) | COST PER ADULT (Double Occupancy) |
|---|--|
| \$999 (if registered before January 31, 2012; after January 31, price increases to \$1099) | \$1149 (if registered before January 31, 2012; after January 31, price increases to \$1249) |

The Cost Per Person (each a Participant) is based on prices, tariffs, and exchange rates in effect on the Effective Date, and is subject to change depending on airline schedule at time of booking. HI shall use commercially reasonable efforts to minimize or eliminate any increase, but Participant acknowledges and agrees that such increases are possible. If the Cost Per Person increases by more than 15%, Participant shall have the right to cancel this Agreement and receive a refund of the Cost Per Person (subject to the Terms and Conditions of this Agreement).*

Payment Schedule

Due With Registration: \$200 per person (non-refundable)

By March 1, 2012: \$100 per person

By May 1, 2012: \$100 per person

By July 1, 2012: \$100 per person

By September 1, 2012: \$100 per person

By November 1, 2012: \$100 per person

By January 1, 2013: \$100 per person

By March 1, 2013: Balance Due

Cancellation Fee Schedule*

No later than 7 days after receipt of registration: \$200 retained

On/before 90 days prior to departure: 50% of Cost Per Person retained

On/before 60 days prior to departure: 75% of Cost Per Person retained

On/before 30 days prior to departure: 100% of Cost Per Person retained

**Subject to Section 4 under Terms and Conditions*

This Agreement is not effective unless accepted by HI below and is subject to the Terms and Conditions, which follow and which are incorporated herein. No verbal representations or Agreements are binding unless included in writing with this Agreement. By signature below, Participant acknowledges that he/she has read, understands, and agrees to the contents of this Agreement and agrees to be bound by the Terms and Conditions, including any Rules and Regulations of HI. Notwithstanding any arrangement, Participant shall be responsible for payment in full of all amounts payable to HI pursuant to this Agreement.

ACCEPTANCE OF AGREEMENT: All of the terms of this Agreement are considered accepted by the Participant five (5) days after HI receives the first deposit, whether or not this Agreement is actually signed by either party.

Brad R. Matheson, President
 Harmony International
 Date: October 17, 2011

 Signature (parent or guardian if participant under 18)

 Date



LIABILITY RELEASE AGREEMENT

The undersigned (the Participant) is a member of or otherwise affiliated with an organization that has contracted with Harmony International, a Georgia corporation (herein HI), to schedule a project (the Project) in which the Participant has voluntarily agreed to participate.

Participant acknowledges and agrees that his/her participation in the Project is voluntarily undertaken by Participant and such participation shall at all times be and remain at his/her sole risk. The undersigned is fully aware of the risks and other hazards inherent in participating in the Project and voluntarily assumes all such risks and hazards, including, without limitation, the risk of death, illness, bodily injury, disease and loss of property, that may be sustained or suffered by Participant as the result of or in the course of participating in the Project.

Participant ACKNOWLEDGES AND AGREES THAT HI AND ANY AGENT, EMPLOYEE, DIRECTOR, OR OFFICER OF HI HAS NOT MADE ANY REPRESENTATION OR STATEMENT, ORAL OR WRITTEN, EXPRESS OR IMPLIED, REGARDING the safety of the Project, including, without limitation, the safety of Participant. Participant represents to HI that he/she has had the opportunity to discuss his/her ability to participate in Project with a physician or other health care provider, all to the full satisfaction of Participant, and Participant does not have any physical limitation that precludes Participant from, or otherwise makes it advisable against, participating in the Project.

Participant for himself/herself and on behalf of his/her personal representatives and heirs **HEREBY FULLY AND FOREVER, RELEASES, WAIVES AND DISCHARGES HI AND ITS SUCCESSORS, NOMINEES, ASSIGNS, OFFICERS, DIRECTORS, EMPLOYEES AND AGENTS (each a "Released Party" and, collectively, the "Released Parties") FROM ANY AND ALL OBLIGATIONS, CLAIMS, DEBTS, LIABILITIES, DEMANDS, AND CAUSES OF ACTION OF ANY KIND, CHARACTER AND NATURE, WHETHER LEGAL OR EQUITABLE, ARISING IN THE PAST, PRESENT OR FUTURE, KNOWN OR UNKNOWN, WHICH ARISE FROM OR ARE RELATED TO, DIRECTLY OR INDIRECTLY, THE PROJECT OR THIS AGREEMENT (EACH A "CLAIM" AND, COLLECTIVELY, "CLAIMS"), INCLUDING, WITHOUT LIMITATION, (i) DEATH, BODILY INJURY OR DISEASE, AND (ii) LOSS OF OR DAMAGE TO ANY PROPERTY (COLLECTIVELY, THE "RELEASE").** Participant represents and warrants that he/she has not assigned, pledged or in any way transferred any right, title or interest in or to the matters covered by this Release.

PARTICIPANT EXPRESSLY AGREES THAT THIS RELEASE IS AND SHALL BE EFFECTIVE IN ALL EVENTS WITH RESPECT TO CLAIMS, EXCEPT TO THE EXTENT CAUSED BY THE SOLE GROSS NEGLIGENCE OF A RELEASED PARTY, AND THEN THIS LIMITATION SHALL APPLY ONLY TO THE PARTICULAR RELEASED PARTY WHO WAS GROSSLY NEGLIGENT.

The invalidity or unenforceability of any particular provision of this Liability Release Agreement shall not affect the other provisions hereof and the parties agree to replace the invalid or unenforceable provision by a valid and enforceable arrangement which achieves as closely as possible the purpose intended by the invalid or unenforceable provision (as evidenced by the wording contained herein).

Participant acknowledges and agrees that he/she bears the sole responsibility for any and all costs and expenses which he/she incurs in the event the Participant voluntarily or involuntarily deviates, for any reason, from any of the scheduled travel arrangements or accommodations for the Project, including, without limitation, travel arrangements and room assignments. Participant acknowledges that the Released Parties are under no obligation to and will not pay any such costs and expenses.

Further, Participant acknowledges that he/she has read the Letter of Agreement between HI and Participant relating to the Project, and agrees to strictly adhere to all terms and provisions therein.

Participant warrants that he/she has read and fully understands the terms, provisions, and effect of this Liability Release Agreement and voluntarily signs the same, and that no oral representations, statements, or inducements apart from the foregoing written agreement have been made to the undersigned.

PARTICIPANT: _____
(PRINTED NAME) (SIGNATURE—parent or guardian if under 18)

WITNESS: _____
(PRINTED NAME) (SIGNATURE)

DATE: _____

TERMS AND CONDITIONS

1. PAYMENT TERMS

1.1 Payment. Participant shall pay all amounts to HI in accordance with the Payment Schedule as set forth in the initial terms (the Initial Terms) on the first page of this Agreement and all other amounts due HI under this Agreement on or before the due date set forth in this Agreement.

1.2 Additional Deposits. From time to time, additional deposits, over and above those set forth in the Payment Schedule, may be required to guarantee space or fares. Participant shall make these additional deposits to HI when requested by HI. The necessity of such additional deposits is to be determined by HI in its sole discretion, and, if reasonably practicable under the circumstances, after consultation with Participant, and may result from circumstances such as, without limitation, traveling during peak periods, necessity for deposits due to the unique nature of the facilities, or any other purpose deemed necessary or advisable by HI.

1.3 Failure to Make Payments. Participant shall be in breach of this Agreement in the event Participant does not make a payments or deposits as required by this Agreement. Participant acknowledges and agrees that HI has expended or will expend time and resources to facilitate the Project and has reserved certain space or fares, which HI may be unable to reschedule. Upon any breach or default of this Agreement, by failure to make payments or otherwise, Participant is subject to the cancellation provisions set forth below and HI is free to reschedule the space or fares to the complete exclusion of Participant. HI may, in its sole and absolute discretion, allow the Participant to remedy the breach by making the required payments or deposits, or by otherwise performing as required. However, Participant agrees that all late payments, if accepted by HI, will be charged a late fee of one and one-half percent (1½ %) of the unpaid balance per month, and the acceptance of any late payment by HI shall not be to the exclusion of any other right or remedy available to HI at law or equity.

2. SCOPE OF SERVICES

The following services are the only services, which are to be undertaken by HI pursuant to this Agreement.

2.1 Services Supplied by HI. As part of this Agreement, HI agrees to supply the services and schedule the accommodations and travel arrangements as provided herein. The terms and provisions of arrangements and agreements made between HI and third-parties (each a Third-Party Agreement), including, without limitation, transportation providers, hotels, and guide services, as part of the services provided HI under this Agreement are hereby incorporated into this Agreement by this reference.

2.2 Services Excluded by HI. All services and items not expressly provided in Section 2.1 of this Agreement will not be provided or arranged by HI and are not covered by the Payment Schedule and must be paid by Participant separately. These services and items include, but are not limited to, the following: domestic travel to point of international departure, local public transportation charges, tips to local guides, meals or beverages other than those noted, expenses of a personal nature such as laundry, telephone, valet, etc., porters for hand-carried luggage, passport and visa fees, free-time activities and optional excursions, and coach driver and guide/escort gratuities to the extent not expressly included in the Pricing.

3. LIMITATIONS ON LIABILITY AND INDEMNIFICATION

3.1 Limitation on Liability of HI. HI and its employees and agents shall not be responsible or liable for losses, damages or injuries to property or person arising from or relating to, directly or

indirectly, this Agreement, including, without limitation, the services provided by or accommodations arranged for by HI hereunder, except to the extent solely caused by the gross negligence of HI. All tickets, coupons, and orders are issued subject to the foregoing and to the terms and conditions under which transportation and/or other services provided hereby are offered and/or supplied by the carrier and/or supplier.

3.2 Indemnification. Participant shall hold HI harmless from and indemnify and defend HI against any and all claims or liabilities for any injury or loss (including death) or damage to any person or property whatsoever arising from or relating to this Agreement, or a breach of any of the provisions hereof by Participant and all acts or omissions of Participant (and attorney's fees, costs, and expenses relating thereto). The provisions of Sections 3.1 and 3.2 of this Agreement shall survive the expiration or termination of this Agreement.

4. CANCELLATION

Participant may cancel this Agreement only upon the terms set forth in this Section.

4.1 Cancellation Schedule. Subject to the terms of the remainder of this Section, and provided that Participant has made all payments required under the Payment Schedule set forth in the Initial Terms, Participant may cancel this Agreement by providing written notice of the cancellation to HI in accordance with this Agreement. Upon receiving such notice, HI will, within thirty (30) days of the date of such notice, return to Participant the deposit(s), if any, in accordance with the Cancellation Schedule set forth in the Initial Terms.

4.2 Limitations on Cancellation. Notwithstanding the provisions of the preceding Section, Participant shall not be entitled to or receive a refund of deposits which have been applied to reserve space or fares to the extent such deposits are nonrefundable, in whole or in part, to HI. Further, in the event deposits or other payments made by Participant are less than (a) the amounts paid by HI, or for which HI is otherwise obligated to pay, to reserve space or (b) fares which are non-refundable, in whole or in part, Participant shall not receive any refund and shall remain liable to HI for the amount(s) expended by HI, or for which HI is otherwise obligated to pay, in excess of the amounts paid by Participant, and all such amounts are due and payable to HI upon notice to Participant. Further, Participant shall be and remain liable to HI for all damages and out-of-pocket expenses to HI resulting from Participant's cancellation of the Agreement.

5. RULES AND REGULATIONS

Participant agrees to abide by all Rules and Regulations of HI, a copy of which has been furnished to Participant. In addition to all other default events under this Agreement, a failure by Participant to comply with the Rules and Regulations shall constitute a default under this Agreement.

6. DEFAULT AND CANCELLATION

Each of the following shall constitute a default under this Agreement: (a) Failure to make any of the payments or deposits when due; (b) A violation of any provision of the Rules and Regulations of HI; (c) Failure to comply with any term or condition of this Agreement; and (d) Failure to communicate or cooperate with HI, in its reasonable discretion, in arranging the Project. Upon a default or breach of this Agreement by Participant, HI shall have the right to exercise any rights and remedies as provided in this Agreement, and all other rights and remedies available at law or equity.

2090 BAKER ROAD ● SUITE 304-104 ● KENNESAW, GEORGIA 30144

TELEPHONE: (888) 935-5551 ● FAX: (770) 635-8585

WWW.HARMONYINTERNATIONAL.COM ● KRISTA@HARMONYINTERNATIONAL.COM

7. JURISDICTION AND LAW

Any dispute arising from or relating to this Agreement shall be resolved in the Superior Court of Cobb County, Georgia, or the Federal District Court for the Northern District of Georgia, and the parties agree to submit to the jurisdiction of such Court(s). This Agreement shall be governed by the law of the State of Georgia, excluding conflict of laws principles thereof.

8. ATTORNEY'S FEES

In the event of any legal action or proceeding brought by either party against the other arising out of this Agreement, HI shall be entitled to recover reasonable attorney's fees incurred in such action in the event the outcome of any such determination is in favor of HI.

9. WAIVER

A failure or refusal by HI to enforce the terms of this Agreement against a breach or violation of any provision of this Agreement by HI shall not operate or be construed as a waiver of that or any subsequent breach or violation of this Agreement by HI. No such waiver shall be valid unless in writing and signed by an authorized officer of HI.

10. NOTICES

Any notice required or desired to be given under this Agreement shall be deemed given if made in writing and delivered by personal delivery, by certified mail return receipt requested, or by overnight delivery by United Parcel Service, Federal Express, or any other commercially recognized overnight carrier to address of each party as specified in this Agreement. Participant is solely responsible for notifying HI, in writing, of any change of address that may occur during the term of this Agreement.

11. INTEGRATION AND AMENDMENTS

The provisions of this Agreement, including these Terms and Conditions, any Rules and Regulations of HI and any other agreement, the terms of which are incorporated into this Agreement by reference, supersede any prior or contemporaneous oral or written agreements between the parties regarding the subject matter of this Agreement. All information located in any advertising brochure is hereby superseded in its entirety by this Agreement and HI hereby disclaims any deemed representations or warranties made therein. To be effective, any amendment to or revision of this Agreement must be in writing and signed by both parties.

12. ACTS OF GOD AND OTHER EVENTS

If the Project is canceled before departure as a result of (each a "Force Majeur") an act of God, war, public disorder, terrorism, insurrection, rebellion, flood, hurricane, earthquake, or other severely inclement weather or other natural calamity, act or inaction of any governmental authority or changes in governmental rules after the date of this Agreement, explosion or fires, strike, work stoppage, or labor disputes, Participant may (1) cancel the Project and request a refund pursuant to the provisions for cancellation set forth in this Agreement, or (2) select an alternate mission program through HI (subject to the non-refundable provisions as provided above in this Agreement with respect to a cancellation of the Project). Participant acknowledges that if the Project is canceled, delayed or otherwise affected by a Force Majeur after commencement of the Project, Participant shall not be entitled to a refund of any of the payments made to HI under this Agreement.

Further, if during the Project a Participant makes alternate travel arrangements as a result of a Force Majeur or otherwise, all costs and expenses relating to such alternate arrangements shall be borne solely by Participant, and Participant hereby agrees to indemnify and hold harmless HI from and against all such charges.

13. TRAVEL CONDITIONS

13.1 Accommodations. Accommodations arranged by HI are student/dorm style housing. Multiple occupancy rooms are the standard room utilized. Each room has private lavatory facilities, including a shower or bath.

13.2 Fluctuations and Substitutions. Substitutions are allowed subject to the terms of the Third-Party Agreement. The addition of a new person to the Project, if such addition can be made, shall be charged at the best price available to HI at that time. A cancellation penalty may apply for reduction in Participants constituting greater than 20% of the original total number of Participants.

13.3 Rooming List and Late Changes for group leaders. Rooming lists must be received by HI no later than forty-five (45) days prior to departure. Late changes in the rooming list, including name changes, additions, and deletions are subject to a late change penalty of \$25.00 per person. This charge is applied to the costs of administrative expenses, long distance telephone calls, overnight mail charges, etc.

13.4 Flight Arrangements. Airfare has not been included in the tour cost. Participant is responsible for all cost related to airfare including airline taxes, fuel surcharges, and baggage fees. HI has arranged for participants to book and purchase airfare through Consolidator Group Travel. In order for HI to accommodate transportation to and from the overseas airport, it is strongly recommended that participant follows the instructions on the page entitled "Instructions for Purchasing Air." Failure to do so means participant may be responsible for arranging their own transportation to and from the overseas airport.

13.5 Group Flight Arrangements. For groups of 20 or more traveling together that opt for HI to arrange air travel: To the extent possible, flights will be provided by scheduled carriers, with the routing and scheduling of all transportation during the Project at the discretion of HI. The price provided for the airfare will be in addition to tour cost and will be based on mid-week travel and airfare in effect on the date of scheduling. Any increase in airfare due to airline taxes or fuel surcharges will be borne by Participant. In addition to other limitations on liability as provided in this Agreement, HI shall not be responsible or liable, in any way, directly or indirectly, in any nature whatsoever for claims, losses, damages, or injuries to property or person (including, without limitation, death) resulting from the provision of or failure to provide transportation under this Agreement. The price of a vacant seat and the cost of segments of the program lost due to missing departure times or absences during the Project cannot be refunded. If any segment of travel or transportation is missed, regardless of the reason, Participant is responsible to make arrangements for and to pay all cost and expenses to rejoin the Project.

13.6 Equipment and Luggage. For group airfare bookings, luggage, including, without limitation, equipment, above normal luggage capacity established by the particular carrier, and the transportation for such equipment is not included in the price set forth in this Agreement and may be subject to additional charges as required by the carrier providing such transportation.